



December 2011

BALDWIN BUGLER

FROM THE PRINCIPAL'S DESK



This Holiday Season reminds us of the special people we know.

*As we think of you this season our hearts overflow.
May the warmth of the season fill your hearts with joy!*



*The Staff of Baldwin Middle School extends
Best Wishes to Parents and Students for a
Happy and Healthy Holiday Season!!*

PTO BULLETIN BOARD

We hope everyone had a wonderful Thanksgiving!

We've been very busy this fall, and we hope you have been able to take advantage of what has been going on here at Baldwin.

Michelle Henry continues to do our **Baldwin Banking** on Thursday mornings outside of the school's library. If your child is interested in keeping his/her allowance, birthday, and odd job money safe, have them stop by and pick-up a packet to set up an account. This is a great experience for the kids to learn about the importance of savings! Congratulations to Holly Johnson for winning a \$100 Savings Bond from the GSB Student Banking Raffle.



As we're gearing up for the holidays, don't forget to clip and save your **Box Tops**, it's an easy way to generate money for the school and it goes directly back to your child.

We would like to thank all of the volunteers and bakers for making our first Election Day Bake Sale a huge success.

All **Spirit Wear** orders will be delivered before the holidays. We must say that Baldwin has a lot of spirit!

Please note that there will be a December PTO meeting on Thursday, **December 8 at 7PM**. All PTO meetings are held in the Teacher's Lounge located down the left ramp, take a left and it's on the left. We would love to see you there!

Have a Happy and Safe Holiday Season and a Healthy New Year!

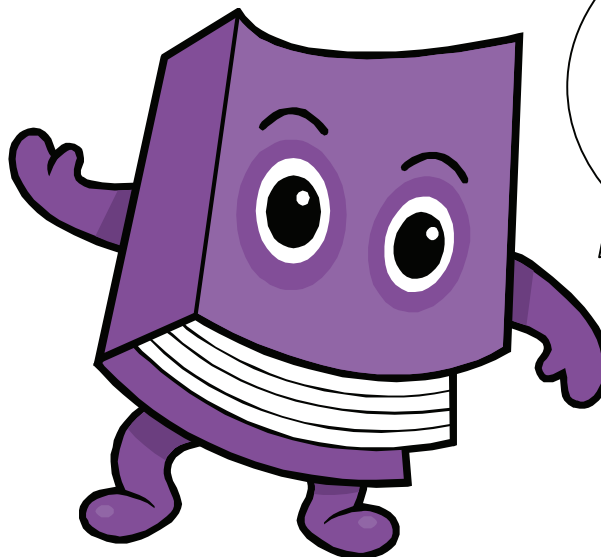
Kara Heller and Pam Murtagh
Co-Presidents, Baldwin PTO

PTO BULLETIN BOARD Continued

The next PTO meeting will be on Thursday, December 8th, at 7:00 PM in the Baldwin teacher's lounge.

Please note all documents for the Bugler must be submitted to Hilary Gindi by December 26th for inclusion in January's newsletter. E-mail: Hilary.Gindi@gmail.com

ORDER YOUR YEARBOOK NOW!



All yearbooks
must be
ordered online
by
December 31st

Don't delay-buy today so you won't be left out in June.
There will be **zero** extra yearbooks ordered so if you want one, you
must order it on-line!

www.guilford.k12.ct.us/~baldwin/

If you do not have access to the internet, please come to the main
office during school hours, with your credit card and
Mrs. Cricchi or Mrs. Polastri will help you.

PTO BULLETIN BOARD Continued

Student Banking Update

We have had an excellent response to our Student Banking so far this year! Student banking is every Thursday that school is in session. Stop by the table outside the library from 7:45 am – 8:05 am.

For those with existing accounts:

The bank will mail the receipt from your deposit to your home address. The money you send in must be the exact amount of your deposit. Student banking volunteers cannot provide change to students.

If you expressed an interest in opening a new account, by now you should have received the Deposit Account Application/Signature Card to fill out and return with your initial \$5.00 deposit. The signature card must be returned before an account can be opened.

Some deposits have been received without the completed signature card and that money is being held in the bank vault. If you have been contacted by Guilford Savings Bank for additional information, please call Janie Patrick, North Madison Branch Manager, (203) 421-7068.

If you are interested in student banking, but have not signed up... it's not too late! Pick up a Deposit Account Application during student banking hours, fill it out and return it with your initial \$5.00 deposit.

Please note: both the student and a parent or guardian must sign the application

Any questions? Please contact Michelle Henry: michelle.henry@yale.edu; 610-506-1782



PTO BULLETIN BOARD Continued



The Guilford Fund for Education announces its STAR Awards (Staff & Teacher Appreciation & Recognition Award), its recognition and donation program for honoring exemplary educators, staff, and community members who have made a difference in education in the Guilford community.

With a donation of \$20, a STAR Award and give a deserving educator the lasting gift of both appreciation and recognition. Recipients will be honored with a personalized certificate that includes a message from the giver, recognition on the GFFE website and acknowledgement of their distinction will be given to their school principal. STAR Awards are available year-round, but make particularly appropriate winter holiday gifts. The awards can be purchased online by visiting the website www.gffe.org. For more information contact the GFFE at [203- 671-4773](tel:203-671-4773) or info@gffe.org.

BALDWIN'S SCHOOL STORE IS OPEN!

The School Store is open in the Café every Thursday during lunch. Students can purchase school supplies at a great price right at school. We have a wide selection of pens, pencils, erasers, sharpeners, paper, folders, calculators, and much, much more. Cash only, please.

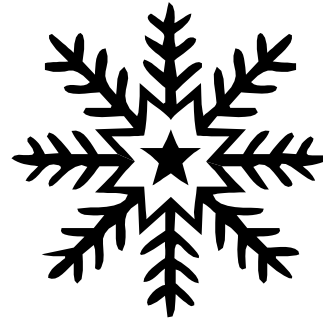
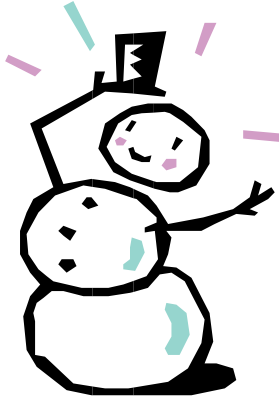
If you would like to volunteer for the School Store during your child's lunch period, please contact Lynn Horton at 203-627-4129 or email her at Lynniehorton@gmail.com.

Non-Discrimination Statement

The Guilford Board of Education does not discriminate on the basis of race, color, religion, marital status, national/ethnic origin, age, sex, sexual orientation, gender identity or expression, or disability in its programs, activities, and employment practices. Questions or complaints related to Title IX should be directed to Anne Keene, Assistant Superintendent, 55 Park St., Guilford, CT 06437 or at 203-453-8216; questions or complaints related to disabilities, should be directed to Patricia Brett, Director of Pupil Services, 280 South Union St., Guilford, CT or 203-453-0128.

September 2011

It's The Most Wonderful Time Of The Year!



Cocoa Café will be open on December 23rd! All students will have time to go to the Cocoa Café to celebrate with music, food and friends. A time to wish everyone safe holidays and a Happy New Year! You can have your picture taken with your friends at the “Baldwin Snow Scene” as well as having cocoa and cookies. Pictures will be distributed in January during the lunch waves. All proceeds will go to Student Council, which supports the Guilford Food Bank, The Community Dining Room and local families in need.

Picture at the “Baldwin Snow Scene” \$2.00

Hot Chocolate \$.50

Cookies \$.50



LUNCHBOXES, SWEATERS, JACKETS, SNEAKERS, GYM CLOTHES etc. etc. etc.

**LOST AND FOUND IS LOCATED IN THE CAFETERIA
PLEASE CHECK IT OUT!**

Please note - several times during the year we send an overwhelming amount of lost and found items to Good Will. We announce it to the students several days before so students will go through it first. We usually send it before vacations so keep that in mind.





HELLO WINTER!



A PLAN IS NEEDED

Winter is here, we've put the storm windows in place and polished the snow shovels, now, we would suggest that you discuss a plan with your children, for possible early dismissals from school. Children need to know where they are to go if school should be dismissed early.

THE PLAN should include a neighbor who would be available to take a child from the bus, a family member who can be alerted to meet the child, or if your child is allowed to go home alone, where a key can be found. Many parents make arrangements to leave work early in the event of a storm.

THE PLAN should be discussed with the child and perhaps written into their assignment notebooks, for handy reference, so that they will be prepared in the event of an early dismissal. A copy of **THE PLAN** may be left in the Main Office as well. Due to the large enrollment and the limited number of lines available, it is impossible for every student to telephone their parents.

Weather information is available on WTNH, channel 8, WTIC, and channel 3 during the day. WTNH weather can be accessed on line during the day at WTNH.com for storm closures. Also local radio stations announce weather conditions in the morning and during the day. **Also, we will use the Alert Now system if school is dismissed early.**

CHANGING YOUR CHILDS AFTER SCHOOL PLANS DURING SCHOOL HOURS SHOULD BE DONE BEFORE 2:00 PM.

THANK YOU FOR YOUR COOPERATION!
~Sincerely, Mrs. Cricchi & Mrs. Polastri

PLEASE TAKE NOTE!

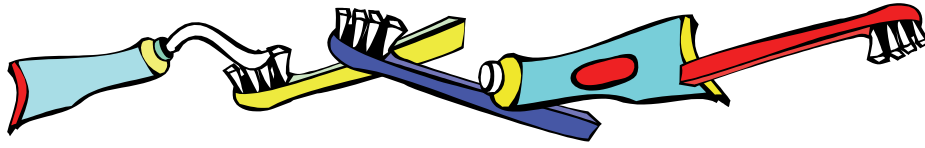
Parents/Guardians:

There are many times during the school year when Parents/Guardians send money to school for field trips, instruments or other school activities. Please be aware if your check is returned to Baldwin for insufficient funds, account closed or any other reason you will be charged the **\$10.00 service charge** the bank bestows to us.

Thank you for understanding.



NEWS FROM THE NURSE'S DESK...



Dear Baldwin Families,

Now that your child is taking care of their permanent teeth, it is more important than ever to ensure that they are practicing excellent oral hygiene. Please take a moment to read a few simple ways to help your child become experts in their dental health care.

1. Flossing daily cleans 35% of the tooth's surface that would otherwise be left uncleaned.
2. Brushing gently with a soft toothbrush for 2-3 minutes twice each day keeps the other 65% of the tooth's surface clean.
3. Visiting the dentist every 6 months for cleaning and fluoride application to strengthen the teeth is a great life-long habit to continue or create.
4. Eating fruits and vegetables instead of sugary snacks between meals can decrease the chances of tooth decay.
5. Talk with your child's doctor or dentist about having your child take a daily fluoride supplement if you have well water.

In good dental health,

Leah O'Callahan, R.N., B.S.N.
Baldwin School Nurse

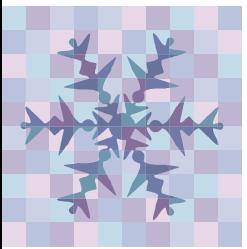
FROM THE GUIDANCE OFFICE

Homework Request:

If a student is absent from school for one or two days due to illness or a family emergency, parents need not be concerned about calling the school to obtain the missed work assignments. When the student returns to school she/he should then check with the teachers for the missed assignments. It is important that the child focus on getting well without having to worry about completing work.

If a student is absent for more than three days due to illness or family emergency, parents may call the Guidance office directly at 457-0222 ext. 418 between 8:15-10:15 a.m. to make arrangements for assignments and necessary books to be obtained from the child's teachers and picked up at the end of the school day.

December

<i>Sun</i>	<i>Mon</i>	<i>Tue</i>	<i>Wed</i>	<i>Thu</i>	<i>Fri</i>	<i>Sat</i>
				1A Team 6.1 & 6.4 Boston Museum of Science Trip Newspaper Club 2:42-3:25 Anime Club 2:42-4:00 Do Something Club 2:42-3:42 Art Club 2:42-3:42	2B	3
4	5C Math Club 2:45-3:30 Yearbook Club 2:45-3:25 Computer Club 2:42-3:42	6D Student Council 2:42-3:30 Sign Language Club 2:42-3:40 Unified Sports 2:42-4:00	7E	8F Team 6.2 & 6.3 Boston Museum of Science Trip Newspaper Club 2:42-3:25 Anime Club 2:42-4:00 Art Club 2:42-3:42	9A Grade 6 Chorus and Select Chorus perform at CT Post Mall 11:00 am	10
11	12B Math Club 2:45-3:30 Computer Club 2:42-3:42	13C Sign Language Club 2:42-3:40 Drama Club 2:42-3:42 Unified Sports 2:42-4:00	14D Select Chorus performs at the Community Center at 10:30 am	15E Chorus Concert Gr 5 & Select @ 7 pm Gr 6 & Select 8 pm Anime Club 2:42-4:00 Do Something Club 2:42-3:42	16F	17
18	19A Math Club 2:45-3:30 Yearbook Club 2:45-3:25 Computer Club 2:42-3:42	20B Student Council 2:42-3:30 Unified Sports 2:42-4:00	21C	22D Anime Club 2:42-4:00	23E	24 Happy Holidays!
25 ENJOY	26 THE	27 WINTER	28 BREAK!	29 HAPPY	30 NEW	31 YEAR!

2011

